

CREDIT SUISSE FOUNDER  
瑞信方正

瑞信方正证券有限责任公司

Credit Suisse Founder Securities Limited (“Company”)

**2015 年年度报告公开披露信息**  
**2015 Annual Report Abstract**

目 录  
Contents

1、年度报告公开信息 Annual Report Abstract.....	4
2、审计报告和财务报表 Audit Report and Financial Statements.....	14

## 重要提示

### Important Notice

本公司董事会、监事会及董事、监事、高级管理人员保证本年度报告内容的真实、准确、完整，不存在虚假记载、误导性陈述或重大遗漏，并就其承担个别和连带的法律责任。

The Board of Directors, the Board of Supervisors, the Directors, the Supervisors, Senior Management Personnel (“SMP”) of the Company guarantee that there are no false representations, misleading statements or material omissions contained in this report, and shall assume the joint and several liabilities for the truthfulness, accuracy and completeness of the contents of this report.

本公司在任的全体四名董事于 2016 年 4 月 21 日作出 2015 年第五次书面决议，审议同意了本公司《2015 年审计报告》。本公司第三届董事会于 2016 年 4 月 27 日召开了 2016 年第一次例行会议，审议同意了《2015 年年度报告》其它部分的内容，全体四名董事参加了该次会议并一致同意本报告。

All four current Directors of the Company reviewed and approved the 2015 Audit Report by way of adopting the fifth written resolutions of the Board of Directors in 2016 on 21 April 2016. At the first regular meeting of the 3<sup>rd</sup> Board of Directors of the Company in 2016 held on 27 April 2016, all the Directors reviewed and approved other parts of contents of 2015 Annual Report of the Company. All four current Directors of the Company attended this meeting and unanimously agreed to this report.

未有董事、监事、高级管理人员声明对年度报告内容存在异议或无法保证其真实、准确、完整。

No Directors, Supervisors or SMP has stated that he/she has disagreement over the contents of 2015 Annual Report of the Company or is unable to guarantee the truthfulness, accuracy and completeness of the contents of this report.

公司负责人、主管会计工作的负责人及会计机构负责人声明：保证年度报告中财务报表的真实、准确、完整。

The Company’s responsible person(s), the SMP who are in charge of accounting and the head of the Finance Department hereby make the representations that they guarantee the contents of the financial statements contained in the annual report are true, accurate and complete.

本报告以中、英文对照编制，在对中英文文本的理解上发生歧义时，以中文文本为准。

This report is prepared in Chinese and English. In case of any discrepancy, the Chinese version shall prevail.

## 一、 公司概况 Current Company Overview

### 1、 公司名称 Name of the Company

公司的法定中文名称为 Legal Chinese name of the Company : 瑞信方正证券有限责任公司

英文名称 English name: Credit Suisse Founder Securities Limited

缩写 Abbreviation: CSFS

### 2、 法定代表人 Legal representative: 何其聪 He Qicong;

总经理 General manager: 汪民生 Wang Minsheng

### 3、 注册资本 Registered capital: 80,000 万元人民币 RMB800 million;

### 4、 各单项业务资格 Single business licenses:

股票（包括人民币普通股、外资股）和债券（包括政府债券、公司债券）的承销与保荐、证券经纪（限广东省深圳市前海深港现代服务业合作区）、中国证券登记结算有限责任公司结算参与人资格、银行间市场业务资格

Single business qualifications: Underwriting and sponsoring of shares (including A share, B shares and H shares) and bonds (including government bonds and corporate bonds); securities brokerage service (only limited to Qianhai area of Shenzhen city in Guangdong Province); qualification of clearing participants obtained from the China Securities Depository and Clearing Corporation Limited (CSDCC); and qualification for inter-bank market business

### 5、 公司地址 Addresses

注册地址 The registered address: 北京市昌平区回龙观镇金燕龙大厦 19 层 1903、1905 号 Room 1903 and Room 1905, 19<sup>th</sup> Floor, Jinyanlong Mansion, Huilongguan Town, Changping District, Beijing 邮编 Postcode:100069

办公地址 Address of office: 北京市西城区金融大街甲九号金融街中心南楼 11 层 1102 单元和 12 层、15 层 11<sup>th</sup> Floor (Unit 1102), 12<sup>th</sup> and 15<sup>th</sup> Floors South Tower, Financial Street Center, No. A9, Financial Street, Xicheng District, Beijing 邮编 Postcode:100033

公司国际互联网网址 Website: <http://www.csfounder.com> , 电子信箱 E-mail: [csfs@csfounder.com](mailto:csfs@csfounder.com)

## 二、 公司历史沿革 History of the Company

2008 年 6 月 13 日，中国证监会向方正证券有限责任公司（现已更名为方正证券股份有限公司）下发证监许可 [2008] 793 号《关于批准设立瑞信方正证券有限责任公司的批复》，批准方正证券与 Credit Suisse AG（中文译名：瑞士信贷银行股份有限公司）（前称 Credit Suisse）共同出资设立瑞信方正证券有限责任公司。公司于 2008 年 10 月 24 日取得营业执照正式设立，于 2008

年 12 月 29 日取得中国证监会颁发的《经营证券业务许可证》(编号: Z15911000)。2015 年 3 月 24 日,北京证监局作出京证监 [2015] 24 号批复,核准公司变更业务范围,增加证券经纪业务(限前海地区)。2015 年 8 月 26 日,中国证监会批准公司换发经营证券业务许可证(编号: 13740000)。目前,公司的经营范围包括:(一)股票(包括人民币普通股、外资股)和债券(包括政府债券、公司债券)的承销与保荐;(二)证券经纪(限广东省深圳市前海深港现代服务业合作区);(三)中国证监会批准的其他业务。

On 13 June 2008, the China Securities Regulatory Commission (CSRC) issued “the Written Reply in respect of the Establishment of Credit Suisse Founder Securities Ltd -- Zheng Jian License [2008] 793”, approving the establishment of Credit Suisse Founder Securities Limited (CSFS, or the Company) which is jointly set up by Founder Securities Co., Ltd. and Credit Suisse AG (formerly known as Credit Suisse). After obtaining business license, the Company was formally incorporated on October 24, 2008 and obtained the Securities Business Operation Permit issued by CSRC (ID: Z15911000) on December 29, 2008. The business scope of CSFS covers underwriting and sponsoring of shares (including Renminbi Ordinary Shares and foreign investment shares) and bonds (including government bonds and corporate bonds) and other businesses approved by the CSRC. On 24 March 2015, the Beijing Bureau of the CSRC (“Beijing Bureau”) issued the reply of Jing Zheng Jian [2015] No. 24, authorizing the Company to expand its business scope to conduct securities brokerage business (limited to Qianhai area). On 26 August 2015, the CSRC ratified the Company’s application for a new securities business license (No. 13740000). The Company’s current business scope includes: Underwriting and sponsoring of shares (including A share, B shares and H shares) and bonds (including government bonds and corporate bonds); securities brokerage service (only limited to Qianhai area of Shenzhen city in Guangdong Province); and (iii) other businesses approved by the CSRC.

### 三、 股东情况 Change of Capital Stock (Capital) and Shareholders

公司在报告期内未发生股本变动。

During the reporting period, there was no change in the Company’s capital stock.

公司股东包括:

The shareholders of the Company include:

股东名称 Name of Shareholders	出资额及占比 Capital Contribution and proportion	质押或冻结情况 Assets Pledged or Frozen
方正证券股份有限公司 Founder Securities Co., Ltd.	53,360 万元人民币 RMB533.6 million 66.7%	无 None
Credit Suisse AG 瑞士信贷银行股份有限公司(Credit Suisse AG 的中文译名)	等值于 26,640 万元人民币的美元 US dollar contribution equivalent to RMB266.4 million 33.3%	无 None

方正证券股份有限公司情况 Profile of Founder Securities Co., Ltd.

方正证券股份有限公司(以下简称“方正证券”),注册成立于 1994 年 10 月 26 日,公司住所位于湖南省长沙市芙蓉区芙蓉中路二段华侨国际大厦 22-24 层,注册资本 61 亿元,法定代表人为董事长雷杰,总裁为何亚刚。方正证券的经营范围包括:证券经纪(除广东省深圳市前海深港现代服务业合作区之外),证券投资咨询,证券自营业务,证券资产管理业务,与证券交易、证券

投资活动有关的财务顾问，直接投资业务，代销金融产品业务，中国证监会批准的其他业务。方正证券于 2011 年 8 月 10 日在上海证券交易所上市交易，股票代码为 601901。

Founder Securities Co., Ltd. (hereinafter referred to as “Founder Securities”) was incorporated on Oct 26, 1994. Its registered address is Floor 22 – 24, Huaqiao International Plaza, Segment II of Fu Rong Zhong Lu, Fu Rong Area, Changsha City, Hunan Province. Its registered capital was RMB6.1 billion. Lei Jie is the legal representative and Chairman of the Board, whilst He Yagang is the President of Founder Securities. The business scope of Founder Securities covers: securities brokerage(excluding securities brokerage business in Qianhai Shenzhen-Hong Kong Modern Service Industry Cooperation Zone), securities investment advisory service, securities proprietary trading, securities assets management, financial advisory service relating to securities trading and securities investment activities, direct investment, distribution of financial products and other business permitted by the CSRC. On August 10, 2011, the A share of Founder Securities was listed on Shanghai Stock Exchange via IPO and traded with ticker of 601901.

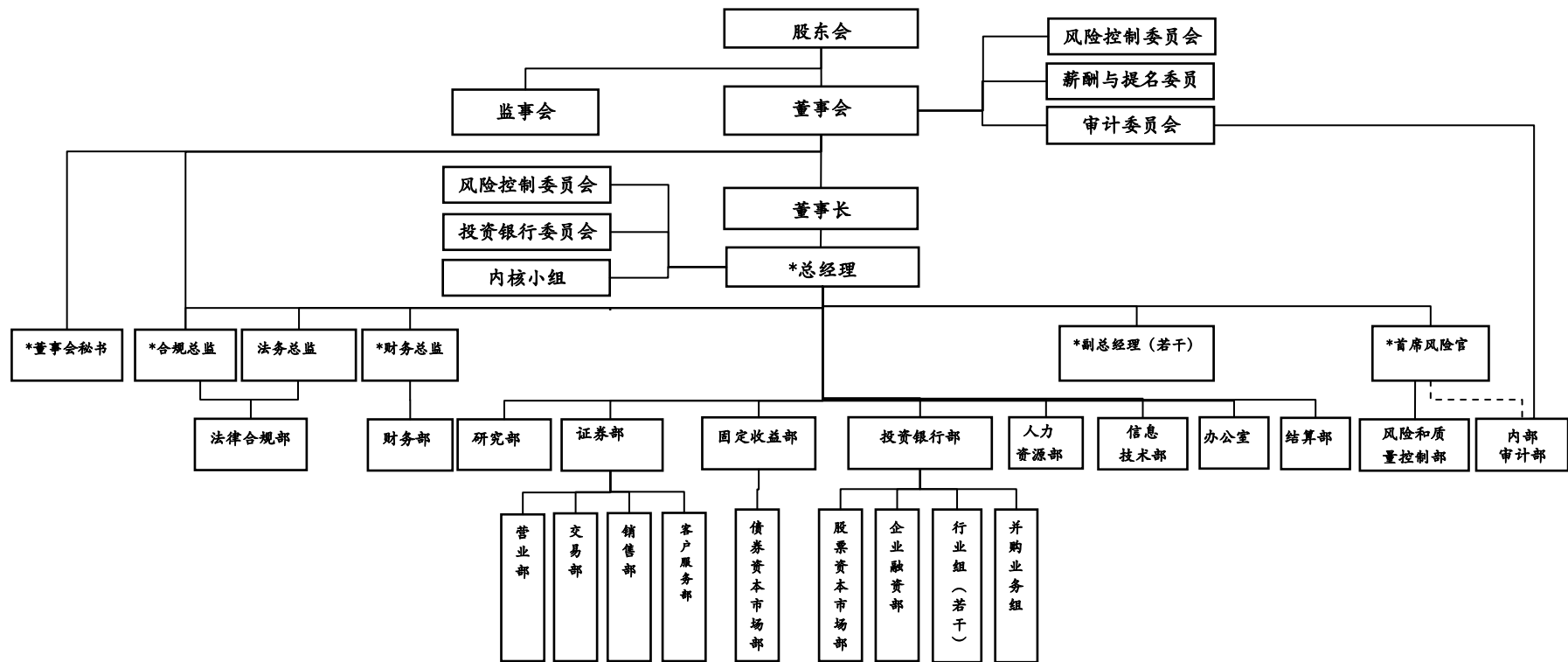
#### 瑞士信贷银行股份有限公司情况 Profile of Credit Suisse AG

Credit Suisse AG (中文译名为瑞士信贷银行股份有限公司，以下简称“瑞士信贷”) 成立于 1856 年 7 月 5 日，其成立地为瑞士苏黎世，其注册办事处地址为瑞士苏黎世 Paradeplatz 8, CH-8001。瑞士信贷的现有注册并已缴付资本额为 4,399,680,200 瑞士法郎。瑞士信贷是一家综合性全能商业银行。根据瑞士联邦银行委员会（现称为瑞士金融市场监督管理局（Swiss Financial Market Supervisory Authority, 简称 FINMA)) 的说明函，瑞士信贷可从事所有银行、投资银行、证券经纪、证券交易、资产管理、融资和其他金融服务业务。所有该等业务都由 FINMA 监管。现任董事会主席为 Urs Rohner，现任首席执行官为 Tidjane Thiam。

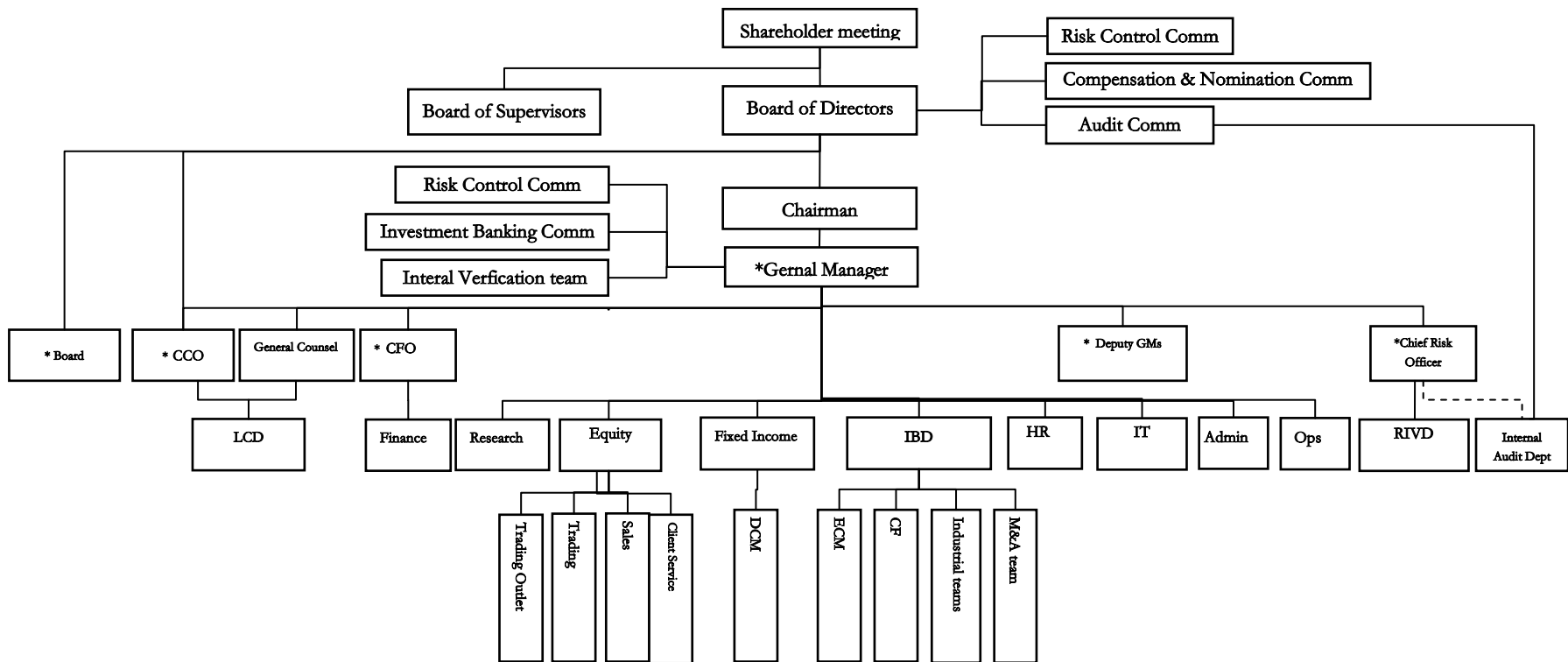
Credit Suisse AG (hereinafter referred to as “CS”) was incorporated on July 5, 1856. Its place of incorporation is Zurich, Switzerland and its registered office address is Paradeplatz 8, CH-8001, Zurich, Switzerland. The current registered and paid-in share capital of CS is CHF4,399,680,200. CS is an integrated universal bank. According to the Explanatory Letter provided by Swiss Federal Banking Commission (now renamed as “Swiss Financial Market Supervisory Authority, FINMA”), CS may engage in all banking, investment banking, securities brokerage, securities trading, asset management, financing and other financial service businesses. All of such businesses are regulated by FINMA. Urs Rohner is the present Chairman of Board of Directors while Tidjane Thiam is the present Chief Executive Officer.

#### 四、 组织机构 Organizational Structure

公司组织机构示意图：Indicative organizational chart:



注：标\*号的职位应由高级管理人员担任



Note: \*indicates this position should be held by senior management personnel.



2015年11月13日，北京证监局作出《关于核准瑞信方正证券有限责任公司设立1家分支机构的批复》（京证监许可[2015]114号），核准公司在广东省深圳市新设1家A型证券营业部，其业务范围是“证券经纪（限广东省深圳市前海深港现代服务业合作区）”。报告期内，深圳前海营业部处于筹备设立过程中，没有正式设立。

On 13 November 2015, the CSRC Beijing Bureau issued the Reply on Ratifying the Application of CSFS to Set up One Branch (Jing Zheng Jian Xu Ke [2015] No. 114), which allowed the Company to set up a Class A securities trading outlet in Shenzhen city of Guangdong Province with business scope covering “securities brokerage service (limited to Qianhai Shenzhen-Hong Kong Modern Service Industry Cooperation Zone of Shenzhen city of Guangdong Province)”. During the reporting period, Shenzhen Qianhai Trading Outlet was under preparation and was not established formally.

## 五、 公司员工构成情况 Employee Structure of the Company

截至2015年底，公司共有员工115名。其中：公司高级管理人员5名，投行人员65名，证券部人员4名，研究人员5名，风险和质量控制人员6人，法律合规人员4名，结算部人员2人，财务人员4名，信息技术人员2名，人力资源人员4名，行政办公人员12名。员工的年龄分布从24岁到53岁不等，平均年龄34岁。96%以上的员工接受过本科或本科以上教育，其中拥有学士学位的员工占全体员工的31%，硕士和双学士占57%，博士学位的员工占5%。

As of the end of 2015, the Company had 115 employees, including: 5 Senior Management Personnel, 65 investment bankers, 4 employees in Equity Department, 5 researchers, 6 employees in Risk and Internal Verification Department, 4 employees in LCD, 2 employees in Operations Department, 4 employees in Finance Dept., 2 IT engineers, 4 employees in HR Dept., and 16 employees in Administration Office. The age of employees ranged from 24 to 53 with average age of 34. More than 96% of total employees had undergraduate or above education background. Specifically, 31% of total employees possessed bachelor or higher degree; 57% of total employees possessed master degree or dual bachelor degree; and 5% of total employees possessed doctor degree.

## 六、 资产质量、流动性情况、负债状况以及投融资活动分析 Analysis of asset quality and liquidity, liabilities, and financing activities

截至2015年12月31日，公司总资产88,959.02万元，主要为随时可变现的货币资金83,824.39万元，占资产比重为94.23%；应收款项183.50万元，占资产比重为0.21%；本公司已根据可收回性单项计提减值准备50万元，其他应收款项无需计提减值准备；递延所得税资产、固定资产、在建工程、无形资产及其他资产合计占资产比重4.81%。公司资产质量状况优良，流动性充足。

As at 31 December 2015, the total assets of the Company were approximately RMB889.59 million, primarily including: cash and cash equivalents of approximately RMB838.24 million or 94.23% of total assets; accounts receivables of approximately RMB1.84 million or 0.21% of total assets. The Company recorded asset impairment reserves of RMB0.5 million and no accrualment of impairment reserves for other accounts receivables was required. Deferred income tax assets, fixed assets, project under construction, intangible assets and other assets represented 4.81% of total assets. The Company had an asset base of high quality and adequate liquidity.

截至2015年12月31日，公司负债总额2,975.08万元，主要包括应付职工薪酬2,257.77万元、

应交税费 225.97 万元、应付款项 122.00 万元、其他负债 369.34 万元，主要系因日常经营活动产生的短期负债。公司 2015 年末资产负债率为 3.34%，偿债能力较强。

As at 31 December 2015, the Company had total liabilities of approximately RMB29.75 million, primarily including: payroll payable of approximately RMB22.58 million, accounts payable of RMB1.22 million, tax payable of approximately RMB2.26 million and other liabilities of approximately RMB3.69 million. Short-term liabilities incurred in the normal course of operation of the Company accounted for the bulk of total liabilities. As at the end of 2015, the ratio of liabilities to assets was 3.34%, indicating the Company had a better solvency.

公司本年度未发生任何融资活动。

The Company did not encounter any needs to raise funds in 2015.

## 七、 业务经营概况及市场地位 Business highlights and market position

2015 年公司的总承销金额为 246.24 亿元人民币，14 个承销项目全部为主承销项目，主承销项目个数与上年同期持平，而总承销金额比上年同期略下降了 3.59%。根据 Wind 资讯统计数据 and 口径，2015 年公司的主承销金额排在第 44 名，较 2014 年的市场地位有所下降。在股权融资方面，公司作为主承销商完成华天科技 20 亿非公开发行项目、青岛碱业重大资产置换及发行股份购买资产并募集配套资金项目，并继续作为联席主承销商参与完成农业银行非公开发行 400 亿元优先股二期项目和兴业银行非公开发行 130 亿元境内优先股二期项目；债权融资方面，公司共计参与完成 10 个承销项目，包括以牵头主承销商身份完成的上海电气 60 亿可转债、天津滨海银行 15 亿金融债、南华期货 4.5 亿次级债、瀚华金控第一期 15 亿和第二期 9 亿公司债、玉皇化工 5 亿公司债，和以联席主承销商身份参与完成的广汽集团 20 亿公司债、广发银行 150 亿二级资本债、海航投资 16 亿公司债、上海国资 20 亿可交换债；在并购和财务顾问业务方面，2015 年公司实现的财务顾问收入共 2,280 万元，而签约合同的总金额为 3,015 万元。

In 2015, the Company realized aggregate underwriting amount of approximately RMB24.62 billion and all the 14 projects undertaken by the Company were lead underwriting projects, i.e. in such projects the Company acted as lead underwriter. In 2015, the number of projects undertaken by the Company as lead underwriter remained unchanged from 2014, while the aggregate underwriting amount fell by 3.59% on a year-on-year basis. With respect to equity capital market, as a leader underwriter, the Company completed RMB2.0 billion non-public offering of Tianshui Huatian Technology and Qingdao Soda Ash Industrial's project of swap of material assets, issue of shares to purchase assets and raising supportive funds; and as a joint lead underwriter, helped Agricultural Bank of China complete its second tranche of RMB40 billion offering of preferred shares and Industrial Bank of China complete its on-shore private placement of the second tranche of RMB13 billion preferred shares. With respect to debt financing, the Company participated in and completed 10 projects. Specifically, the Company completed the following projects as a lead underwriter: Shanghai Electric's RMB6.0 billion offering of convertible bonds, Tianjin Binhai Rural Commercial Bank's RMB1.5 billion offering of financial bonds, Nanhua Futures' RMB450 million offering of subordinated bonds, Hanhua Financial Holding's RMB1.5 billion tranche I offering of corporate bonds and RMB900 million tranche II offering of corporate bonds and Yuhuang Chemical's RMB500 million offering of corporate bonds. In addition, as a joint lead underwriter, the Company completed the following projects: GAC Group's RMB2.0 billion offering of corporate bonds, China Guangfa Bank's RMB15 billion offering of Tier II capital bonds, HNA Investment' RMB1.6 billion offering of corporate bonds and Shanghai State-owned Assets Operation's RMB2.0 billion offering of exchangeable bonds. As for its M&A and financial advisory segment, the Company realized financial advisory income of RMB22.80 million and executed contracts with an aggregate value of RMB30.15 million in 2015.

据毕马威华振会计师事务所出具的审计报告：2015 年公司营业收入 16,955.94 万元，较上年同

期小幅增长。其中，公司业务取得的手续费及佣金净收入 12,393.85 万元，较上年同期增长近 10%；公司自有资本金运作产生的利息 3,822.63 万元；公司 2015 年净利润为 1,623.90 万元，较上一年度有较大幅度增长。

According to the financial statements audited by KPMG Huazhen, the auditor engaged by the Company, the Company recorded operating income of approximately RMB169.56 million in 2015, up slightly from 2014. In particular, the Company recorded net fees and commission income of approximately RMB123.94 million, increasing by nearly 10% from 2014. Interest income from the management of equity funds amounted to approximately RMB38.23 million. The Company recorded net profits of approximately RMB16.24 million in 2015, representing a strong rebound from 2014.

公司 2015 年发生的业务及管理费用为 14072.57 万元，其中主要为：员工成本 10431.50 万元，租赁费 1303.19 万元，差旅费 521.63 万元，办公费 587.21 万元，折旧及摊销 362.97 万元等。

The total operating and administrative expenses reached approximately RMB140.73 million in 2015, primarily including employee costs of approximately RMB104.32 million, business premise rentals of approximately RMB13.03 million, travel expenses of approximately RMB5.22 million, administrative expenses of approximately RMB5.87 million and depreciation and amortization of approximately RMB3.63 million.

截至 2015 年 12 月末，公司已经正式立项、正在执行的项目共计 31 个，其中 2015 年新立项的项目 22 个，占比超过 70%。在这 31 个项目中，有一部分可能在 2016 年即实现投行业务手续费收入，预估为 2.85 亿元，较上一年度有较大幅度的增长。公司将进一步加强业务团队建设、强化考核和激励、开展与中外双方股东的业务协同，继续为今后若干年度的投行业务打下坚实的基础。

As of the end of December 2015, the Company had a total of 31 originated or on-going projects, 22 of which were originated in 2015, accounting for more than 70% of all projects. Among the 31 projects, it is estimated that some projects will bring commission income of approximately RMB285 million to the Company in 2016, representing a significant growth from 2014. Furthermore, the Company will make further efforts in team building, performance appraisal and incentives and the business collaboration between the Company and its two shareholders, thus laying solid groundwork for the investment banking segment of the Company in coming years.

## **八、 内部控制自我评价报告结论和注册会计师的意见 Conclusion of the Self-appraisal Report on Internal Control and opinions given by certified public accountant**

根据 2015 年度公司内部控制运行情况，公司管理层按照董事会的授权组织进行内部控制自我评价工作，评价范围涵盖了公司各个业务和职能部门，并向公司董事会出具了《瑞信方正证券有限责任公司内部控制自我评价报告（截至 2015 年 12 月 31 日止年度）》。该项自我评价报告认为：报告期内，本公司日常工作相关的事项均已经建立了内部控制制度，并得以有效执行，达到了公司内部控制的目標，不存在重大缺陷和重要缺陷。2016 年 4 月 21 日，公司全体董事以 2016 年第五次书面决议，审议通过了该项自我评价报告。

Based on the implementation of internal control of the Company in 2015, under the arrangement of the management of the Company, LCD took the lead in organizing the self-appraisal on internal control, which covers all business and functional departments of the Company. Upon completion of this self-appraisal, the Self-appraisal Report on Internal Control of the Company (For the Year Ending on 31 December 2015) was provided to the Board of Directors. This report finds that, during the reporting period, the Company has established

internal control systems for all of matters relating to day-to-day work of the Company, effectively implemented these systems and realized the Company's objectives of internal control. Neither material defects nor important defects are identified. On 21 April 2016, all the Directors of the Company reviewed and passed this self-appraisal report by adopting the fifth written resolutions in 2016.

自内部控制评价报告基准日至本报告出具日, 本公司并未发生对评价结论产生实质性影响的内部控制的重大变化。

There were no material changes in internal control that may have material impacts on the conclusion of appraisal from the benchmark date to the issuance date of this self-appraisal report on internal control.

公司聘请毕马威华振会计师事务所对于公司内部控制进行了审计, 并于 2016 年 4 月 21 日出具了标准无保留的《针对瑞信方正证券有限责任公司 2015 年 12 月 31 日与财务报告相关内部控制的专项说明》, 表明未发现公司于 2015 年 12 月 31 日与财务报告相关的内部控制存在可能导致财务报表重大错报不能被及时防止或发现的重大缺陷。

On 21 April 2016, KPMG Huazhen, engaged by the Company to audit the internal control of the Company, issued a standard unqualified special introduction on the internal control relating to financial reports of Credit Suisse Founder Securities Limited for the year ended 31 December 2015, stating that it did not found any material deficiencies in internal control relating to financial statements that may result in the failure to prevent or identify any material mistakes in financial statements of the Company as of 31 December 2015.

## 九、 董事、监事、高级管理人员薪酬情况 Compensation of Directors, Supervisors and Senior Management Personnel

职务 Title	报告期累计薪酬 (元) (税前) Accumulated Compensation during the reporting period (RMB, pre-tax)
董事 Director	568,626.08
其中: 独立董事 Including: Independent Director	61,839.08
监事 Supervisor	1,290,776.59
高管人员 Senior Management Personnel	18,775,852.53
合计 Total	20,635,255.20

根据《瑞信方正证券有限责任公司章程》、以及公司根据《证券公司治理准则》的相关规定并参考其它类似的中外合资证券公司相关做法制定的《董事、监事和高级管理人员薪酬和绩效考核制度》, 董事和监事的报酬和发放方式由股东会决定, 高级管理人员的薪金、其它报酬、奖励、纪律处分事宜, 以及高级管理人员的绩效奖金的延期支付的比例和期限, 均由董事会根据对于高管人员的绩效考核情况决定。

In accordance with the Amended and Restated Articles of Association of the Company and the Measures for the Administration of Remuneration and Performance Assessment of Directors, Supervisors and SMP, which is formulated by the Company by making reference to relevant provisions of the Rules for Corporate Governance of Securities Firms and relevant practice of similar Sino-foreign joint venture securities firms, the compensation of Directors and

Supervisors and method of payment shall be determined by the Shareholder's meeting, while the compensation, other remuneration, bonus and disciplinary actions as well as the portion and term of deferred payment of incentive bonus of SMP shall be determined by the Board of Directors based on their respective results of performance review.

公司董事会下设薪酬与提名委员会，根据董事及高级管理人员管理岗位的主要范围、职责、个人综合能力素质、重要性以及中国其它类似的中外合资证券公司相关岗位的薪酬水平，制定其报酬及激励计划和绩效考核方式，并对董事和高级管理人员进行考核并向董事会提出建议。薪酬与提名委员会对董事会负责，薪酬委员会的提案提交董事会审议决定。

The Compensation and Nomination Committee under the Company's Board of the Directors formulates compensation, incentive plans and methods of performance review for Directors and SMP based on their primary functions and responsibilities, individual comprehensive capabilities, importance of their positions and by reference to the compensation level of other comparable Sino-foreign securities firms in China. The Compensation and Nomination Committee is accountable to the Board of the Directors and the proposals put forward by the Compensation and Nomination Committee should be submitted to the Board of the Directors for review and decision.

截至目前，公司未安排董事、监事、高级管理人员或者员工根据股权激励计划持有或者控制本公司股权，公司也没有支付过任何非现金薪酬。现任高级管理人员所获奖金的 40% 遵循等分原则在未来三年内延期发放。

Up to now, the Company has no arrangement that Directors, Supervisors, SMP or employees hold or control the shares of the Company by way of stock option incentive plan. The Company has not paid non-cash compensation. 40% of performance incentive bonus payable to current SMP for a given year should be paid in equal parts by way of deferred payments in the following three years.

## **十、 履行社会责任的工作情况 Performance of Social Responsibilities**

公司作为瑞士信贷与方正证券合资经营的一家证券公司，始终以客户需求为工作中心，将素质合格且具有主观能动性的员工视为成功要素，致力于成为具有经营特色与核心竞争力、在中国最受欢迎的具有国际背景的证券业务经营机构之一。

The Company, beingAs an investment bank securities firm jointly established by Credit Suisse and Founder Securities, the Companyalways views customer focus demands as its priority and employee competencethose employees with high quality and initiatives as the key elements for its success. The Company strives to becomingbecome one of the most admired popular and highly competitive securities firmsservice providers in China, which has with international background and unique operating features and core competetiveness in China.

公司内部由公司管理层决策和落实与社会责任相关的工作，各个部门和公司员工在日常工作中依法合规执业和经营。

The management of the Company is responsible for making decisions on and carrying out the tasks in relation to social responsibilities, while each department and the Company's employees work and operate in accordance with relevant laws and regulations.

报告期内，在公司主要经营的承销与保荐业务方面，公司继续强化各项内部控制工作，未出现重大的业务、管理等方面的风险状况。

During the reporting period, Regarding the core business of the Company, i.e. securities underwriting and sponsoring, the Company made continuous efforts in enhancing various internal controls and no material risks in respect of operation and management occurred in 2015.

结合公司客户主要为机构客户的特点，公司在网站“投资者园地”中明确列示了相关投资者教育知识信息；在公司网站公布客户投诉方式，由专人跟踪相关投诉举报情况，并由法律合规部按月向监管机构报送。2015年，公司未发生由客户服务和体验所引发的任何投诉、纠纷、诉讼或仲裁。

Given that the customer base of the Company primarily consists of institutional investors, the Company presents the knowledge and information in relation to investor education in the “Investor Camp” on the Company’s website. The method for customers to make complaints is listed on the Company’s website. The Company also assigned people to keep track of complaints and whistleblowing. The Company was not involved into any compliant, dispute, legal proceeding or arbitration arising from customer service and customer experience in 2015.

公司持续重视员工培训和发展、人文关怀、公司文化等方面的工作，努力为公司员工创造一个良好的职业发展环境。公司在报告期内继续在依法纳税、创造就业机会等方面服务和回馈社会。

The Company paid particular attention to employees training and career development, care-giving, corporate culture and other areas, striving to create a good environment for the career development of its employees. During the reporting period, the Company continued to serve and contribute to the society by way of paying taxes in accordance with laws, creating job opportunities and providing social benefits.

瑞信方正证券有限责任公司

自 2015 年 1 月 1 日  
至 2015 年 12 月 31 日止年度财务报表

## 目录

财务报表审计报告

财务报表

资产负债表

1

利润表

3

现金流量表

4

所有者权益变动表

6

财务报表附注

7





KPMG Huazhen LLP  
8th Floor, KPMG Tower  
Oriental Plaza  
1 East Chang An Avenue  
Beijing 100738  
China

毕马威华振  
会计师事务所  
(特殊普通合伙)  
中国北京  
东长安街1号  
东方广场毕马威大楼8层  
邮政编码: 100738

Telephone 电话 +86 (10) 8508 5000  
Fax 传真 +86 (10) 8518 5111  
Internet 网址 kpmg.com/cn



## 审计报告

毕马威华振审字第 1600434 号

瑞信方正证券有限责任公司董事会:

我们审计了后附的第 1 页至第 41 页的瑞信方正证券有限责任公司(以下简称“贵公司”)财务报表,包括 2015 年 12 月 31 日的资产负债表,2015 年度的利润表、现金流量表、所有者权益变动表以及财务报表附注。

### 一、管理层对财务报表的责任

编制和公允列报财务报表是贵公司管理层的责任,这种责任包括:(1)按照中华人民共和国财政部颁布的企业会计准则的规定编制财务报表,并使其实现公允反映;(2)设计、执行和维护必要的内部控制,以使财务报表不存在由于舞弊或错误导致的重大错报。

### 二、注册会计师的责任

我们的责任是在执行审计工作的基础上对财务报表发表审计意见。我们按照中国注册会计师审计准则的规定执行了审计工作。中国注册会计师审计准则要求我们遵守中国注册会计师职业道德守则,计划和执行审计工作以对财务报表是否不存在重大错报获取合理保证。

审计工作涉及实施审计程序,以获取有关财务报表金额和披露的审计证据。选择的审计程序取决于注册会计师的判断,包括对由于舞弊或错误导致的财务报表重大错报风险的评估。在进行风险评估时,注册会计师考虑与财务报表编制和公允列报相关的内部控制,以设计恰当的审计程序,但目的并非对内部控制的有效性发表意见。审计工作还包括评价管理层选用会计政策的恰当性和作出会计估计的合理性,以及评价财务报表的总体列报。

我们相信,我们获取的审计证据是充分、适当的,为发表审计意见提供了基础。

审计报告(续)

毕马威华振审字第 1600434 号

三、 审计意见

我们认为，贵公司财务报表在所有重大方面按照中华人民共和国财政部颁布的企业会计准则的规定编制，公允反映了贵公司 2015 年 12 月 31 日的财务状况以及 2015 年度的经营成果及现金流量。

毕马威华振会计师事务所(特殊普通合伙)



中国注册会计师

程海良



中国 北京

龚凯



2016 年 4 月 21 日

瑞信方正证券有限责任公司  
资产负债表  
2015年12月31日  
(除特别注明外, 金额单位: 人民币元)

资产	附注	2015年	2014年
货币资金	6	838,243,927.37	812,041,542.60
其中: 客户存款		-	-
结算备付金	7	301,469.36	300,000.00
其中: 客户备付金		-	-
应收款项	8	1,835,045.52	38,348,753.41
应收利息	9	5,533,555.60	6,346,569.44
存出保证金	10	800,000.00	400,000.00
固定资产	11	4,647,416.32	3,126,300.33
在建工程	12	7,541,640.00	6,623,577.00
无形资产	13	3,432,272.45	3,913,352.50
递延所得税资产	14	11,432,684.93	17,611,120.58
其他资产	15	15,822,221.00	6,993,288.64
资产总计		<u>889,590,232.55</u>	<u>895,704,504.50</u>
负债和所有者权益			
负债			
应交税费	5(3)	2,259,665.18	11,270,417.64
应付职工薪酬	16	22,577,740.41	37,672,910.96
应付款项	17	1,220,000.00	1,000,000.00
其他负债	18	3,693,377.92	2,160,678.59
负债合计		<u>29,750,783.51</u>	<u>52,104,007.19</u>

刊载于第7页至第41页的财务报表附注为本财务报表的组成部分。



瑞信方正证券有限责任公司  
资产负债表(续)  
2015年12月31日  
(除特别注明外, 金额单位: 人民币元)

负债和所有者权益(续)	附注	<u>2015年</u>	<u>2014年</u>
<b>所有者权益</b>			
实收资本	19	800,000,000.00	800,000,000.00
资本公积	20	637,357.96	637,357.96
盈余公积	21	8,510,964.87	6,887,069.70
一般风险准备	22	8,510,964.87	6,887,069.70
未分配利润		42,180,161.34	29,188,999.95
<b>所有者权益合计</b>		<u>859,839,449.04</u>	<u>843,600,497.31</u>
<b>负债及所有者权益总计</b>		<u>889,590,232.55</u>	<u>895,704,504.50</u>

此财务报表已于2016年4月21日获本公司批准。



何其聪  
法定代表人

(签名和盖章)



汪民生  
主管会计工作的  
负责人

(签名和盖章)



林鹤  
会计机构负责人

(签名和盖章)



刊载于第7页至第41页的财务报表附注为本财务报表的组成部分。

瑞信方正证券有限责任公司  
 利润表  
 2015 年度  
 (除特别注明外，金额单位：人民币元)

	附注	<u>2015 年</u>	<u>2014 年</u>
<b>营业收入</b>			
手续费及佣金净收入	23	123,938,506.53	113,114,034.00
其中：投资银行业务手续费净收入		123,938,506.53	102,099,834.00
利息净收入	24	38,226,251.10	43,354,766.16
汇兑收益		364,977.95	204,386.80
其他业务收入	25	7,029,645.76	8,769,404.31
营业收入合计		<u>169,559,381.34</u>	<u>165,442,591.27</u>
<b>营业支出</b>			
业务及管理费	26	(140,725,685.74)	(193,163,562.61)
营业税金及附加	27	(7,288,955.14)	(6,851,142.40)
营业支出合计		<u>(148,014,640.88)</u>	<u>(200,014,705.01)</u>
营业利润/(亏损)合计		21,544,740.46	(34,572,113.74)
营业外收入	28	872,646.92	1,183,440.21
利润/(亏损)总额		22,417,387.38	(33,388,673.53)
所得税费用	29	(6,178,435.65)	7,481,115.81
净利润/(亏损)		16,238,951.73	(25,907,557.72)
其他综合收益		-	-
综合收益总额		<u>16,238,951.73</u>	<u>(25,907,557.72)</u>

刊载于第 7 页至第 41 页的财务报表附注为本财务报表的组成部分。

瑞信方正证券有限责任公司  
现金流量表  
2015 年度  
(除特别注明外，金额单位：人民币元)

	附注	<u>2015 年</u>	<u>2014 年</u>
<b>经营活动产生的现金流量</b>			
收取利息、手续费及佣金的现金		209,351,125.12	144,340,728.36
收到的政府补贴		-	319,974.00
收到的税费返还		623,519.14	857,441.21
收到其他与经营活动有关的现金		24,094.00	306,025.00
经营活动现金流入小计		<u>209,998,738.26</u>	<u>145,824,168.57</u>
支付利息、手续费及佣金的现金		(2,630,000.00)	(3,510,000.00)
支付给职工以及为职工支付的现金		(126,206,790.10)	(124,557,919.39)
支付的各项税费		(9,562,415.54)	(10,727,781.57)
支付其他与经营活动有关的现金		(42,148,235.13)	(31,054,618.93)
经营活动现金流出小计		<u>(180,547,440.77)</u>	<u>(169,850,319.89)</u>
经营活动产生的现金流量净额	30(1)	<u>29,451,297.49</u>	<u>(24,026,151.32)</u>
<b>投资活动产生的现金流量</b>			
处置固定资产、无形资产和其他长期资产收回的现金		274,019.42	-
投资活动现金流入小计		<u>274,019.42</u>	<u>-</u>
购建固定资产、无形资产和其他长期资产支付的现金		(3,886,440.73)	(7,971,764.32)
投资活动现金流出小计		<u>(3,886,440.73)</u>	<u>(7,971,764.32)</u>
投资活动产生的现金流量净额		<u>(3,612,421.31)</u>	<u>(7,971,764.32)</u>

刊载于第 7 页至第 41 页的财务报表附注为本财务报表的组成部分。

瑞信方正证券有限责任公司  
现金流量表(续)  
2015年度  
(除特别注明外, 金额单位: 人民币元)

	附注	<u>2015年</u>	<u>2014年</u>
汇率变动对现金及现金等价物的影响		364,977.95	204,386.80
现金及现金等价物净增加/(减少)额	30(2)	26,203,854.13	(31,793,528.84)
加: 年初现金及现金等价物余额		812,341,542.60	844,135,071.44
年末现金及现金等价物余额	30(3)	838,545,396.73	812,341,542.60

刊载于第7页至第41页的财务报表附注为本财务报表的组成部分。

瑞信方正证券有限责任公司  
所有者权益变动表  
2015及2014年度  
(除特别注明外, 金额单位: 人民币元)

	附注	实收资本	资本公积	盈余公积	一般风险准备	未分配利润	所有者权益计
2015年1月1日余额		800,000,000.00	637,357.96	6,887,069.70	6,887,069.70	29,188,999.95	843,600,497.31
本年增减变动金额							
1. 净利润		-	-	-	-	16,238,951.73	16,238,951.73
2. 利润分配							
- 提取盈余公积	21	-	-	1,623,895.17	-	(1,623,895.17)	-
- 提取一般风险准备	22	-	-	-	1,623,895.17	(1,623,895.17)	-
2015年12月31日余额		<u>800,000,000.00</u>	<u>637,357.96</u>	<u>8,510,964.87</u>	<u>8,510,964.87</u>	<u>42,180,161.34</u>	<u>859,839,449.04</u>
2014年1月1日余额		800,000,000.00	637,357.96	6,887,069.70	6,887,069.70	55,096,557.67	869,508,055.03
本年增减变动金额							
1. 净亏损		-	-	-	-	(25,907,557.72)	(25,907,557.72)
2. 利润分配		-	-	-	-	-	-
- 提取盈余公积	21	-	-	-	-	-	-
- 提取一般风险准备	22	-	-	-	-	-	-
2014年12月31日余额		<u>800,000,000.00</u>	<u>637,357.96</u>	<u>6,887,069.70</u>	<u>6,887,069.70</u>	<u>29,188,999.95</u>	<u>843,600,497.31</u>

刊载于第7页至第41页的财务报表附注为本财务报表的组成部分。